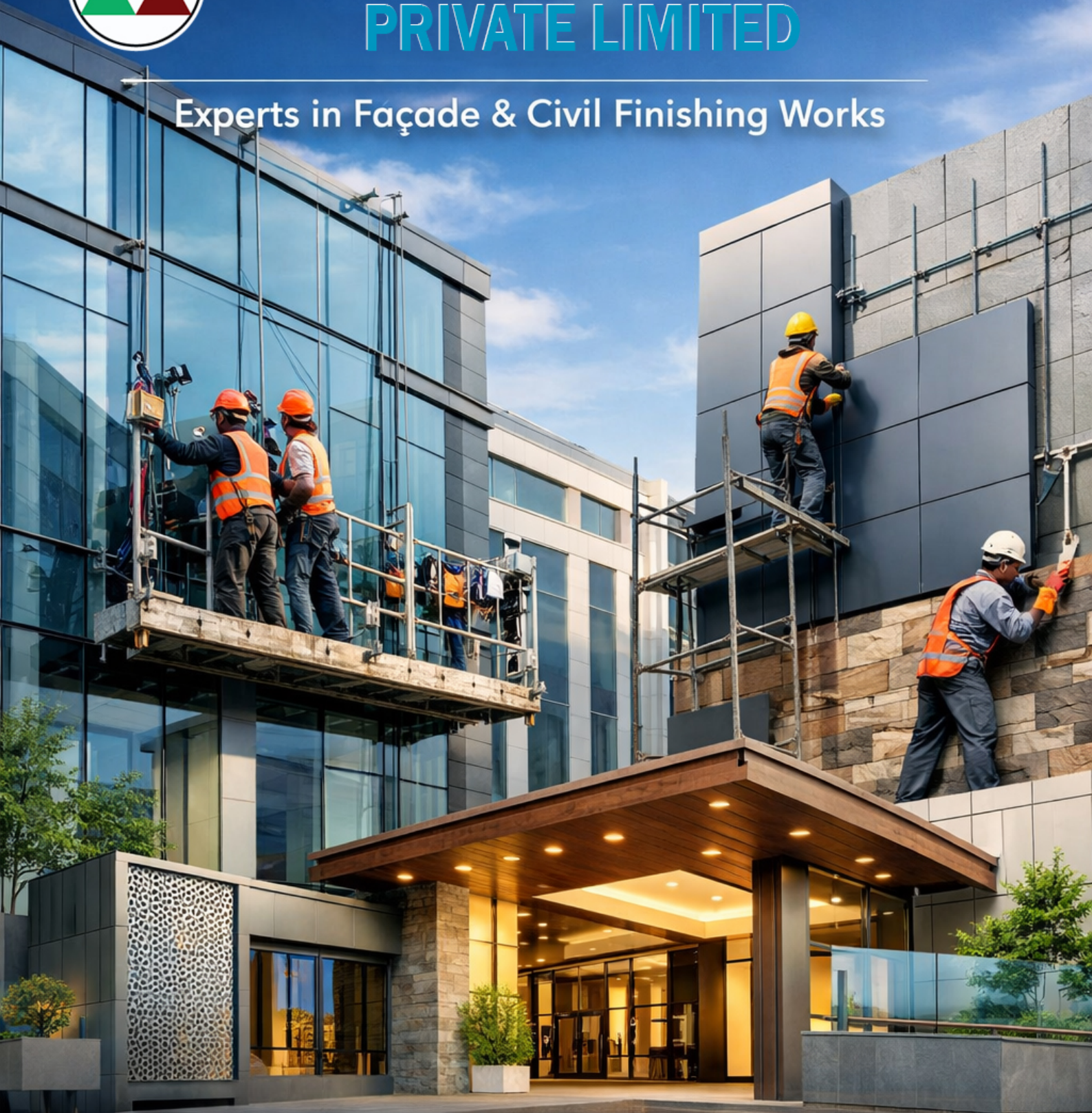




RANIHATI CONSTRUCTION PRIVATE LIMITED

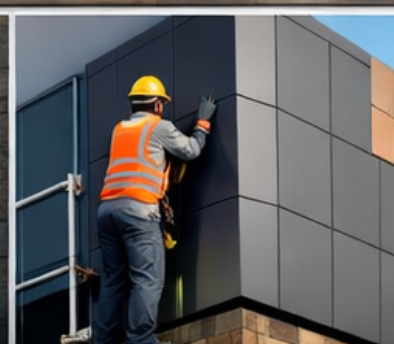
Experts in Façade & Civil Finishing Works



**GLASS & ALUMINIUM
FACADES**



STONE CLADDING



ACP & METAL CLADDING



INTERIOR FINISHING

Ranihati Construction Private Limited is an India-focused contracting company specializing in Façade Works, Civil Finishing, and Core Civil. We combine engineering discipline with site execution strength to deliver clean finishes, accurate detailing, and dependable timelines.

Our Story

Started in 2013 as Radiance Construction, we grew through consistent delivery and client trust. With expanded capability and a stronger organizational structure, we evolved into **Ranihati Construction Private Limited** to serve larger and more complex projects across locations.

What We Deliver

1. Façade & Elevation Works
Glass | Aluminium | ACP/Metal Cladding | Louvers | External Feature Elements
2. Civil Finishing Works
Plaster | Painting | Flooring | Waterproofing | Interior & Exterior Finishes
3. Core Civil & Site Works
Support civil works | Repairs | Modifications | Site development assistance

Why Clients Choose Us

1. Compliance-first execution
2. Skilled teams + proper machinery & tools
3. Safety and quality built into every activity
4. On-time delivery with clear coordination
5. Growth at a Glance

FY 2022–23: ₹13.61 Cr

FY 2023–24: ₹21.41 Cr

FY 2023–24: ₹22.42 Cr

Architectural Finishing Solutions

1. Facade & Cladding

- Glass Facade (Unitized, Semi-Unitized, Spider Systems)
- ACP, Metal, and Stone Cladding

2. False Ceiling & Partitions

- Gypsum, Calcium Silicate, Metal, and Acoustic Ceilings
- Aluminum, Gypsum, and Fire-Rated Partitions

3. Flooring & Interior Finishing

- Vitrified Tiles, Marble, Granite, Epoxy & PU Flooring
- High-End Interior Finishing for Luxury Projects

4. Structural Glazing & Canopies

- Steel & Aluminum Canopy Fabrication
- Spider Glazing, MS & Glass Structures

5. Insulation & Waterproofing

- Thermal, Acoustic, and Fireproof Insulation
- PU Coatings & Chemical Waterproofing

We are 10 years experienced on:

- 1)Facade work:** (Glass Facade - unitized/semi unitized/spider/Louver)
- 2)CLADDING Work.** (ACP/Stone/Metal/Perforation/Louver)
- 3)Canopy** (Glass/ACP/Hanging/Other)
- 4)Louver** (in variant system.)
- 5)False Ceiling** (Gypsum/Calcium/Metal/Other)
- 6) Flooring** (Vitrified Tiles Flooring/Granite Flooring / Marble Flooring/Kota Stone Flooring/Epoxy Flooring/PU Flooring/False Flooring)
- 7)Partition** (Gypsum / Aluminium / Wooden / Fire rated)
- 8)Insulation** (Thermal / Noise Barrie)
- 9)SS Hand Railing**
- 10) Gypsum Plaster/Putty/Paint**
- 11) False Flooring**

Short Intro

Dear Sir,

We would like to introduce ourselves as "Ranihati Construction Pvt. Ltd.," a leading civil finishing and civil structure firm with a registered office in West Bengal. Our presence spans across Pan India, specializing in various types of civil finishing and core civil structural works.

Our journey began in 2013 as a proprietorship firm named "Radiance Construction," focusing on delivering quality services in civil finishing and structural projects. Over the years, we have built a reputation for excellence, ensuring quality work within the scheduled time. Fast forward from 2013 to 2025, in just 12 years, we are pleased to announce significant growth as a company while maintaining our strong ethos of commitment and efficiency. We have successfully expanded our portfolio of projects, covering both civil finishing and structural works.

To better represent our evolving business, we have transitioned to "Ranihati Construction Private Limited," reinforcing our dedication to being a genuine and flexible contractor in the civil construction industry. With our expanding client base, our turnover has grown from Rs. 1 crore to Rs. 23 crores, reflecting our consistent performance and trust in the market. Our experienced senior management team, along with specialized department heads, ensures compliance and exceptional customer service, setting us apart in the industry.

Our philosophy is straightforward – compliance as a prerequisite, followed by a strong focus on service to both agency partners and contractors. "Ranihati Construction Private Limited" employs skilled professionals and utilizes advanced machinery, tools, and equipment to execute projects with an unwavering commitment to safety, quality assurance, and timely completion. These driving factors have established us as a leading entity in the civil finishing and structural construction sector.

Starting our journey in 2013, we have successfully navigated challenges, including the critical phase of the Covid-19 pandemic, steadily increasing our turnover. In the last financial year (FY 22-23), our turnover was Rs. 13.61 crores, which grew to Rs. 23 crores in the current FY 23-24. For the upcoming FY 2024-2025, our target is to achieve a turnover of Rs. 30 crores, further cementing our position as a trusted name in the civil construction industry.

Regd. Off- Ranihati, Amta Road. Joynagar, Panchla, Howrah-711302(W.B)

M.-9007824246 Website : rconpl.in

Email: ranihati.construction@gmail.com

GSTIN : 19AAICR7604LIZV

CIN No. : U74999WB2018PTC224615

🌐 www.rconpl.in ✉ info@rconpl.in ☎ +919007824246

Facade & Cladding



Company Details

Registered office- M Plaza, Shop no.-13, Ranihati, Joynagar,
Panchla, Howrah-711302, W.B,
GST-19AAICR7604LIZV

- **Company CIN No. - U74999WB2018PTC224615**
- **Company PAN No. - AAICR7604L**
- **Company MSME- UDYAM-WB-08-0006857**
- **Company ESI No. - 41000727590000999**
- **Company PF No. - WBHLO1826861000**
- **Company Importer- Exporter Code - AAICR7604L**

Other State Office

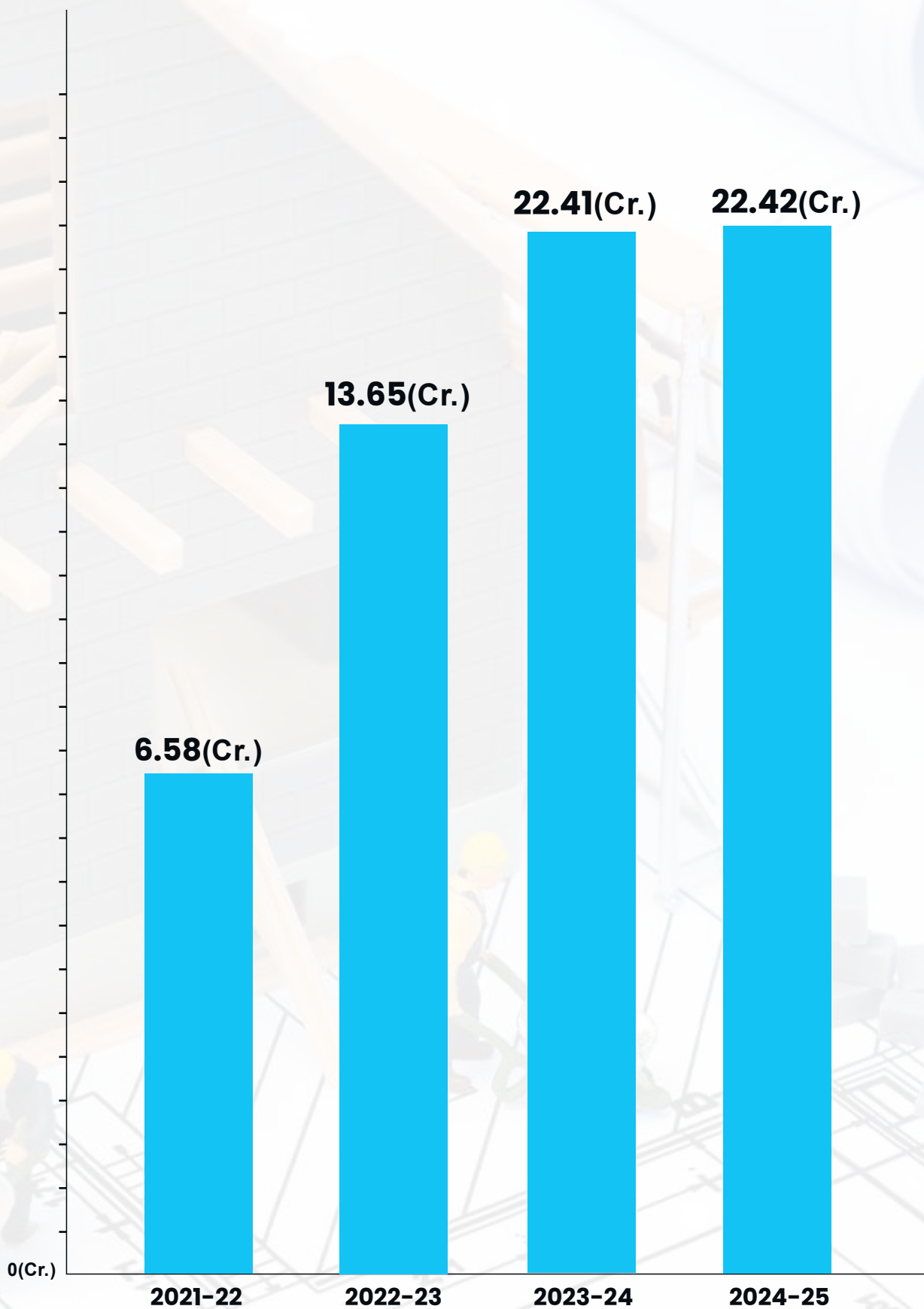
Registered office- M Plaza, Shop no.-13, Ranihati, Joynagar, Panchla, Howrah-711302, W.B, GST- 19AAICR7604LIZV

STATE NAME	CITY	ADDRESS
DELHI	New Delhi	55, 2ND Floor, Lane-2, Westend Marg, Saidullajab, New Delhi, Delhi-110030 (GSTIN-07AAICR7604LIZ0)
MAHARASHTRA	Borivali	Sureshwari Techno It Park Premises, Link Road, Borivali West Mumbai, Borivali, Mumbai, (GSTIN-27AAICR7604LIZY)
TAMIL NADU	Tiruchirapalli	106, 54/1, SP Arcade, 9A Cross West Extension Thillai Nagar, Tiruchirapalli, Tamil Nadu-620018, (GSTIN-33AAICR7604LIZ5)
ASSAM	Kamrup Metropolitan	House no 14, Indrapur, Chilarai Nagar Path, Guwahati, Kamrup Metropolitan, Assam-781032, (GSTIN-18AAICR7604LIZX)
MADHYA PRADESH	Indore	3rd Floor, Building-305, Satguru Parinay, PU3, A.B. Road, Indore, Madhya Pradesh-452010, (GSTIN-23AAICR7604LIZ6)
CHHATTISGARH	Raipur	Ground floor, GORE PARISAR, Raipur-Chhattisgarh 492001 (GSTIN-22AAICR7604LIZ8)
JHARKHAND	Ranchi	Plot No 121,124, Namkum Silwai, Ranchi, Jharkhand-835103 (GSTIN-20AAICR7604LIZC)
UTTAR PRADESH	Lucknow	547/KA/149, Rajajipuram, Sheetla Puram, Lucknow, Uttar Pradesh-226017 (GSTIN-09AAICR7604LIZW)
ODISHA	Khordha	Plot No-412/885, Jatni, Sandhapur, Khordha Odisha-752050 (GSTIN-21AAICR7604LIZA)
BIHAR	Wets Champaran	2nd Floor, Ward No 26, Mitra Chawk, Gaj No - 2, Bettiah, Wets Champaran, Bihar-845438, (GSTIN-10AAICR7604LIZD)

Our Clients

- Mumbai Metro Rail Corporation Ltd.
- ITC Limited
- Godrej Properties Ltd.
- Joyville Housing Project
- ITD Cementation India Ltd.
- Kalpataru Projects International Ltd.
- Ambuja Neotia
- Larsen & Toubro Ltd.
- Power Mech Projects Ltd.
- KEC
- WPIL Ltd.
- Shapoorji Pallonji Group
- Tata projects Ltd.
- Hindustan Construction Company
- SSSS Construction
- Premco Rail Engineers Limited

Company Growth Chart





We manage our-

- Materials
- Manpower
- Machines
- Stock
- Daily work report
- Safety report
- Quality

By
EZNIRMAN



DOWNLOAD NOW



FOLLOW US :



The Art and Science of External Facade Works in Modern Construction:

In the ever-evolving world of architecture and construction, external façades play a crucial role in defining the aesthetics, functionality, and sustainability of a building. More than just an outer shell, facades contribute to energy efficiency, weather resistance, and structural integrity. At Ranihati Construction Pvt. Ltd., we specialize in innovative façade solutions that blend aesthetics with performance, ensuring durability and compliance with industry standards.

What is an External Facade?

An external façade is the outermost layer of a building that serves as its visual identity while offering protection against external elements. Façades can be made from various materials, including glass, aluminum, stone, metal panels, and composite materials. The choice of material depends on the architectural style, climate conditions, and functional requirements of the building.

Types of External Facade Works:

- 1. Glass Facades:** Commonly used in commercial buildings, glass façades offer a sleek and modern look while allowing maximum natural light penetration.
- 2. Aluminum Composite Panel (ACP) Facades:** Lightweight, durable, and weather-resistant, ACP cladding is a popular choice for high-rise structures.
- 3. Stone Cladding:** Provides a classic and elegant appearance while enhancing the thermal insulation of buildings.
- 4. Metal Facades:** Ideal for industrial and contemporary designs, metal panels add durability and a futuristic touch.
- 5. Green Facades:** Incorporating vegetation into facades improves air quality, reduces heat absorption, and promotes sustainability.

Glass Facades and Their Types:

Glass facades are one of the most popular choices in modern architecture due to their aesthetic appeal and functional advantages. Here are the main types of glass facade systems:

1. Curtain Wall System

A curtain wall is a non-structural glass façade that hangs from the building's structure. It enhances aesthetics, improves insulation, and provides weather protection.

Regarding Facade Work

There are two main types:

- Stick System: Glass panels and aluminum frames are assembled on-site.
- Unitized System: Pre-fabricated panels are installed directly, ensuring faster construction.

2. Structural Glazing

This system uses silicone sealants instead of metal frames, creating a seamless and sleek glass surface. It is commonly used in high-rise commercial buildings.

Structural glazing is further categorized into two main systems:

- Unitized Structural Glazing: This system consists of pre-fabricated panels that are assembled in a controlled factory environment. These panels are then transported to the site and installed, ensuring high precision, better quality control, and faster execution. It minimizes the risk of errors and enhances water and air tightness, making it highly efficient for large-scale projects.
- Semi-Unitized Structural Glazing: This system involves a mix of factory-assembled units and on-site installation. The primary framing members are pre-fabricated, while the glass panels and sealants are installed on-site. This system is more flexible and allows adjustments based on site conditions, making it ideal for projects requiring customization.

Performance glass options for structural glazing include:

- Single Glazing: A single layer of glass that offers basic transparency and weather protection but has limited thermal insulation properties.
- Double Glazed Unit (DGU): Comprising two layers of glass with a spacer filled with argon or air, this system enhances insulation, reduces heat transfer, and improves energy efficiency.

3. Spider Glass Facade:

A frameless glass system supported by stainless steel spider fittings. It provides maximum transparency and is often used in airports, showrooms, and shopping malls.

4. Double Skin Facade:

A high-performance system consisting of two layers of glass with a ventilated cavity in between. The space between the glass layers can be naturally or mechanically ventilated, reducing heat gain in summer and heat loss in winter. This system significantly improves thermal insulation, reduces noise pollution, and enhances energy efficiency by minimizing the building's reliance on artificial heating and cooling systems. Double skin façades are commonly used in high-performance sustainable buildings aiming for LEED or other green certifications.

5. Kinetic Facade:

A kinetic facade is an advanced system that incorporates moving elements that respond to environmental conditions such as sunlight, wind, or temperature. These façades can dynamically adjust to optimize energy efficiency, improve ventilation, and control natural lighting. Using materials like aluminum panels, perforated metal sheets, or glass panels, kinetic facades are increasingly used in futuristic architecture to create visually appealing, high-performance buildings that adapt to their surroundings.

This system uses minimal metal support, with glass panels held by small stainless-steel fittings. It offers a modern, minimalist aesthetic.

Importance of High-Quality Façade Works

- **Energy Efficiency:** Modern façade systems help regulate indoor temperatures, reducing reliance on artificial heating and cooling.

6. Point Fixed Glass Facade:

This system uses minimal metal support, with glass panels held by small stainless steel fittings. It offers a modern, minimalist aesthetic.

Importance of High-Quality Facade Works

- **Energy Efficiency:** Modern facade systems help regulate indoor temperatures, reducing reliance on artificial heating and cooling.
- **Weather Protection:** A well-designed facade shields the building from rain, wind, and extreme temperatures.
- **Aesthetic Appeal:** The facade is the first impression of a building, influencing its visual impact and architectural significance.
- **Structural Integrity:** Properly installed facade systems contribute to the overall stability and longevity of the structure.

Challenges in Facade Installation and Solutions:

- **Structural Compatibility:** Ensuring the facade integrates seamlessly with the building's framework.
- **Weather Resistance:** Selecting materials that withstand environmental conditions while maintaining durability.
- **Safety Compliance:** Adhering to fire safety, wind load, and seismic resistance standards.

Ranihati Construction's Expertise in Facade Works

At Ranihati Construction Pvt. Ltd., we bring expertise in external façade works with a commitment to quality, precision, and innovation. Our team of skilled professionals ensures seamless execution, from design consultation to final installation. We leverage advanced technologies and sustainable materials to enhance the durability and efficiency of our facade solutions.

Facade Pictures

Whether you are looking for a contemporary glass facade, durable ACP cladding, or an eco-friendly green facade, our solutions are tailored to meet your project's specific needs. With a focus on timely execution and superior craftsmanship, we continue to be a trusted name in the facade industry.

Conclusion

External façade works are more than just an architectural statement; they are a crucial component of modern construction that enhances aesthetics, functionality, and sustainability. By combining innovative designs with advanced materials, Ranihati Construction Pvt. Ltd. is committed to delivering façade solutions that stand the test of time.

For inquiries and collaborations, reach out to us and let's build the future together!



siliconindia

RANIHATI CONSTRUCTION
PRIVATE LIMITED

recognized by **siliconindia** *Magazine as*

siliconindia 10 MOST PROMISING
**FACADE ENGINEERING &
DESIGN SERVICES - 2024**

*Through this Award, we acknowledge and applaud the company's
myriad services, and their ingenuity to leverage the best practices
in presenting unique methodologies to address
complex business demands.*

Mandvi Singh

MANDVI SINGH
Managing Editor

RANIHATI CONSTRUCTION:

A One-Stop Facade Solutions Provider

With the growing industrialization and urbanization over the last two decades, there's been a noticeable rise in the construction & architecture realm in the country. This growth has subsequently created demand for the facade engineering and design services too in the Indian market. Formidably, as customers realize that a well-designed building facade enhances aesthetic appeal, reduces energy consumption, maximizes natural light, and optimizes airflow, the facade engineering and design services market providers are just banking on it. Here, Ranihati Construction (RCPL), an upcoming leader in the industry, is nevertheless behind. The company is exemplarily playing its part, committedly providing the most effective facade works to its clients, emphasizing on functionality and visuals.



Sekh Arif Hossain
Managing Director



RCPL strives to deliver the most compelling aesthetics possible while delivering each of the client's projects


With almost six years under its belt, this Howrah, West Bengal based company aims to offer comprehensive turnkey facade solutions to its clients at a competitive & sustainable price. It specializes in sourcing and designing of customized facades based on the specific needs of its clients. "Over the period, we have mostly covered government projects working as a sub-vendor. Also, it is our quality, teamwork, integrity, transparency, and accountability we hold for our projects that keeps bringing us unique and challenging projects. We strive to deliver the most compelling aesthetics possible while delivering each of the client's projects", says Sekh Arif Hossain, Managing Director.

The partners and staff at the company are the experts in the construction process, and it is their rich experience that separates the company from the competition, respective to project executions. "We have presence across several Indian states such as MH, TM, DL, BR, JR, UP, and MP. Our company is backed by the full resources team of home office staff and a deep networking

infrastructure. We believe that we have been entrusted with the responsibility to make the building architectures look impressive, and thus through RCPL, we ensure to offer services that well accommodate all the needs of our clients through a streamlined process", shares Arif.

The Emphasis on Design & Value Engineering

The engineers and designers of RCPL are exemplary providers of ACP Cladding, Canopy, Wall Panelling, False Ceiling, Under Deck Insulation, and Noise Barrier for fine construction of 3D structural models with complex designs and detailing levels. The versatility of RCPL in the 3D model process helps the highly experienced Facade engineers and professionals in effective designing and detailing of building systems. Also, the company has all the required expertise and knowledge in Facade & Fenestration detailing service with the most updated software and associated tools. "Our domain expertise helps us in providing complete, exclusive, customized design solutions for all stakeholders within structural engineering", says Sekh Arif Hossain, Managing Director.

Observing gradual growth since the inception, RCPL is ready to make its mark further in the industry. Hence, passionate about innovative facades which is environment-friendly and helps in temperature control inside spaces, it aspires to bring in technologies like gold glass, and more to serve the clients better and level-up its industry game. It envisions growth and success while embracing integrity, ethical practices, respect, responsibility, and trust. 



SI NO.	OUR PROJECTS SEGMENT	NAME OF THE PROJECT	ITEM EXECUTED
1	Residencial Housing	Joyville Shapoorji Housing Project	Aluminium Windows, Glass Door, Rain Water Harvesting Tank, Brick Work, Plaster
		Godrej Orchard	Aluminium Door Window, Partition, Glazing & Louver work
		Sukhobristi Housing Project	Aluminium Door Window Work
		NMDK	SS Hand Railing, MS Work, Polycarbonate Sheet, PPGL Sheet work
		ITD Delhi CPWD	Aluminium Louver Door Work
		Godrej Prakriti	Aluminium Door Window, Partition, Glazing & Louver work
2	Commercial Project	ITC Limited Uluberia	Mise Civil Work, MS Grill, SS Hand Railling, False Ceilling Work
		ITC Limited Panchla	Mise Civil Work, MS Grill, SS Hand Railling
		Jindal Limited Panchla	Mise Civil Work, Aluminium Door, Window Partition, False Ceilling Work
		ITD Jalpaiguri Court	False Ceilling Work
		Gateway Ghat Assam	Roofing Sheet, False Ceiling, Painting, Flooring, Wall Cladding, Modular Furniture, WPC CNC Panel work, CNC cutting metal jali work etc.
		MMRCL Project	False Ceiling, Painting, Flooring, Wall Cladding, Modular Furniture

ONGOING PROJECTS ON FINISHING WORK



SI NO.	OUR PROJECTS SEGMENT	NAME OF THE PROJECT	TEM EXECUTED
3	Commercial Projects	KPTL Pipe Line projects	False ceiling
		ITD Delhi Thal Sena	Gypsum partition Work
		ITD Delhi Auro Space	Aluminium Window Work
		Berger Corporate House	MS Hand Railing, Cubical partition
		Buildtech	Aluminium Eliptical Louver, MS Work
		Mumbai ICC	Block Work,Palaster,Painting,Aluminium, Steel Fire Rated Doors, Windows, Glass Door, Cubical Toilet Partion, False Ceiling, AR Tiles, Vitrified Tiles, Ceramic Tiles, Granite
4	Metro Station	BDAPL	Structural Glazing,ACP, Aluminium Door & Window, Partiton, counter Glass, LDB Door Wok
		SSSS Construction	Structural Glazing,ACP, Aluminium Door & Window, Partiton, counter Glass, LDB Door Wok
5	Power Plant	Power Mech Bhusawal	Aluminium Doors,Windows,False ceiling
		PMPL Udanguri	Aluminium Doors, Windows, ACP Clading, Automatic Sensor Door

- **WBSEDCL 33KV Sub station (khanakul)**

Excavation, Back Filling, Foundation to super structure of Staff Quater & Compound Wall including Brick work & plaster

- **Rain Water Hervesting Tank (Joyville, Howrah)**

Excavation, Back Filling of Rain Water Hervesting Tank, Brick Work & Plaster

- **Water Treatment Plant (Jeerabad, Dhar, MP)**

Foundation & Super Structure of Water Tank and Staff Quater

- **Water Treatment Plant (Chhatarpur, Khajuraho, MP)**

Foundation & Super Structure of Water Tank and Staff Quater

- **Mumbai Coastal Road Project (Cumballa Hill Beach Candy, Mumbai)**

Block work, Plaster of Office Building



Views of future prospects in India by MD-

SEKH ARIF HOSSAIN

Managing Director

📞/📧 : +91 9007824246 / 9088511511

✉ : arif@rconpl.in



The construction industry in India is poised for significant growth and offers promising prospects for the future.

Here are some views on the potential growth drivers and opportunities:

1. Infrastructure Development:

The Indian government's continued focus on infrastructure development through initiatives such as Bharatmala, Sagarmala, Smart Cities Mission, and the Atmanirbhar Bharat Abhiyan presents vast opportunities for the construction industry. Investments in roads, highways, railways, ports, airports, urban infrastructure, and affordable housing are expected to drive construction activity across the country.

2. Urbanization and Real Estate:

Rapid urbanization, coupled with the growing demand for commercial and residential spaces, will fuel construction activity in India's urban centers. The need for affordable housing, mixed-use developments, commercial complexes, and industrial parks will drive demand for construction services, including residential and commercial construction, infrastructure development, and real estate projects.

3. Government Initiatives:

Government policies and programs aimed at boosting the construction sector, such as Housing for All, Pradhan Mantri Awas Yojana (PMAY), and the Real Estate (Regulation and Development) Act (RERA), are expected to drive investment and growth in the industry. These initiatives focus on streamlining regulations, enhancing transparency, and increasing access to affordable housing, which will stimulate construction activity.

Views of future prospects in India by MD-

4. Smart Cities and Sustainable Development:

The Smart Cities Mission aims to transform Indian cities into sustainable and technologically advanced urban centers. Projects under this initiative, including smart infrastructure, green buildings, and intelligent transportation systems, will drive demand for construction services that prioritize innovation, efficiency, and sustainability.

5. Digitalization and Technology Adoption:

The construction industry in India is witnessing increased digitalization and technology adoption, including Building Information Modeling (BIM), advanced construction materials, prefabrication, and modular construction techniques. These innovations improve project efficiency, reduce construction time, minimize costs, and enhance quality, driving growth and competitiveness in the sector.

6. Foreign Direct Investment (FDI) and Public-Private Partnerships (PPPs):

Foreign investment inflows and partnerships with international firms are expected to play a significant role in driving growth and innovation in the Indian construction industry. FDI in real estate and construction activities, along with PPPs in infrastructure projects, will bring in capital, expertise, and technology, accelerating project implementation and expanding opportunities for domestic and foreign players alike.

7. Focus on Green and Sustainable Construction:

With increasing awareness of environmental sustainability and climate change, there is a growing emphasis on green and sustainable construction practices in India. Projects incorporating energy-efficient designs, renewable energy integration, waste management systems, and green building certifications will gain traction, driven by regulatory mandates, market demand, and corporate sustainability goals.

Views of future prospects in India by MD-

8. Workforce Development and Skilling:

Addressing skill shortages and enhancing workforce capabilities through training, education, and skilling initiatives will be critical for sustaining growth and innovation in the construction industry. Investments in vocational training programs, apprenticeships, and technology-oriented skill development will ensure a skilled workforce capable of meeting industry demands and driving productivity.

Overall, the construction industry in India is expected to witness robust growth driven by infrastructure development, urbanization, government initiatives, technology adoption, sustainability trends, and investment inflows. Companies that adapt to evolving market dynamics, embrace innovation, prioritize sustainability, and invest in workforce development will be well-positioned to capitalize on the opportunities and drive growth in the construction sector.





SI NO.	OUR PROJECTS SEGMENT	NAME OF THE PROJECT	ITEM EXCICUTED
1	Airport	Pune InternationAirport -AAI-ITD	Structure Glazing, ACP Cladding & Wall panelling, Glass Partition, Aliminium Door Window, Glass door, MS Structure Work
		Trichy International Airport-AAI-ITD	Structure Glazing, ACP Cladding & Wall panelling, Glass Partition, Aliminium Door Window, Glass door, MS Structure Work
2	Metro Rail UG	Phoolbagan, Kolkata, KMRCL	Vensaft Louver, Tom ECR Laminated Glass, Spider Glazing, Smoke Barreer work, False ceiling
		Sealdah Metro Station, Kolkata	Aluminium & louver, Counter Glass, MS Perforated Sheet Work
		Mhakaran Metro B.B.D. Bagh, Kolkata	Bulkhead Work
		HOWRAH MOIDAN METRO-AFCONS -RC	Bulkhead Work, Counter Glass, Smoke barrier
		HOWRAH STATION Metro - GODREJ- RCPL	Bulkhead Work
3	Metro Rail Elevator	Sector-V to Stadium	Alu Louver work, Acp
		NOAPARA-DAKSHINESWER-RVNL	False ceiling, Aluminium & louver, Counter Glass, ACP
		JOKA TO BBD BAG METRO	SS hand rail, Counter glass, Aluminium, false ceiling
		NEW GARIA TO AIRPORT METRO CORRIDOR- RVNL-ANS 1	False ceiling, Aluminium & louver, Counter Glass, ACP
		JOKA TO BBD BAG METRO Kolkata 700104	False ceiling, Aluminium & louver, Counter Glass, ACP
		NAGPUR METRO RAIL CORPORATION LTD NAGPUR, MAHARASTRA.	False ceiling, Aluminium & louver, ACP, Structure Glazing
		TARATALA-MAJERHAT-BEHALA METRO Kolkata Behala, Taratola	False ceiling, Aluminium & louver, Counter Glass, ACP
		RVNL ITDANS 3RCPL	False ceiling, Aluminium & louver, Counter Glass, ACP
		BDPL - (PD) MH	False ceiling, Aluminium & louver, Counter Glass, ACP
		BDAPLANS 2 - RCPL	False ceiling, Aluminium & louver, Counter Glass, ACP
		Mumbai Mrtro Line-3 Project	Office setup & Interior, Partition work
		BDAPL-ANS 2	False ceiling, Aluminium & louver, Counter Glass, ACP
		BDAPL-(PD)	False ceiling, Aluminium & louver, Counter Glass, ACP
3	Port Building	IOCL Captive Jetty project-ITD CEM	Aluminium Door Window Work, Paint, false Ceiling & Tiles

COMPLETED PROJECTS



SI NO.	OUR PROJECTS SEGMENT	NAME OF THE PROJECT	ITEM EXECUTED
5	Power Plant	TATA STEEL PLANT - PHASE I, JAJPUR, KALINGANAGAR, ODISHA	Aluminium Partition, CID proof Tiles Underdeck Insulation, False Ceiling False Flooring, Partition
		SINGRENI THERMAL POWER STATION, SINGRENI, Manchirai Telengana	Acid Proof Tiles work
		Durgapur Projects Ltd (DPL) DURGAPUR, WB	Aluminium & Partition
		India Power Corporation Limited (IPCL) HALDIA, WB	Acid Resistant Tiles & Paint
		BARUNI THERMAL POWER STATION, BARUNI, BIHAR	Aluminium & Partition, False Ceiling Acid Resistant Tiles & Paint
		NTPC-TOWNSHIP PROJECT, NABINAGAR	Aluminium Door Window Work
		IOCL MANGALAM ODISHA	Aluminium Door Window Work
		Unchahar Thermal Power Station	Aluminium Door Window Work
6	Steel Plant	TATA STEEL PLANT, KALINGA NAGAR - TPL Odhisa	Underdeck Insulation, False Ceiling
		Unchahar Thermal Power Station (1 X 500 MW), Unchahar, UP	Aluminium work
		TATA STEEL PLANT, KALINGA NAGAR - TPL Odhisa	Aluminium Door Window Work, Under deck Insulation Work
		KEONJHAR - RC	Fire door
		NLMK Housing Project	Aluminium Door Window Work
7	Industrial Office Complex	BASF Chemical Complex DAHEJ, BHARUCH, GUJRAT	Insulating, False Ceiling, Glazing, Granite Flooring
		INDIRA GANDHI AUTOMIC RESEARCH CENTRE, FRFCF, KALAPAKKAM, CHENNAI	False Ceiling Works
		GOA SHIPYARD LTD, VASCO DA GAMA, GOA	Aluminium Door, Window Louver
		GOA SHIPYARD LTD Vasco da Gama, Goa	False ceiling, Aluminium & louver, Counter Glass, ACP
		GOA SHIPYARD LTD New Vaddem, Vasco da Gama	SS RAILING, Alu Door-Window
		Amity University Jharkhand-SPCPL	SS RAILING, Alu Door-Window
8	Public office Building	HOJ TOWER COMPLEX RAJARHAT, NEW TOWN	Structural Glazing, Aluminium Door, Window, Furniture

COMPLETED PROJECTS



SI NO.	OUR PROJECTS SEGMENT	NAME OF THE PROJECT	ITEM EXCICUTED
9	Institutinal Building	IIT ROPAR, Roper, PUNJAB	Aluminium, Glazing & ACP
		CENTRAL UNIVERSITY BIHAR GAYA (CUBG) Bihar	Aluminium & Fire line partition
		UNIFIED CAMPASS OF BOSE INSTITUTE SALT LAKE, SEC V, KOLKATA	Structural Glazing, & False ceiling
		SHIV NADAR UNIVERSITY - DADRI Noida, Uttar Pradesh	Aluminium Door Window Work
		IIT BHUBANESWER Jatni, ODISHA	Aluminium Door Window Work
		NALANDA UNIVERSITY	Grid False Ceiling, Seamless false Ceiling, Wooden False Ceiling
	Residencial Housing	NOAMUNDI TOWNSHIP PROJECT, Jharkhand	Aluminium work
		NOAMUNDI TOWNSHIP PROJECT, Jharkhand	Aluminium Door Window work
		NLMK INDIA Coating Private Limited SECTOR-13, AURANGABAD, Maharashtra	Aluminium Door Window work
		Godrej Platinum - RC	Aluminium Door Window work
		NOAMUNDI TPL HOUSE	Aluminium Door Window work
		Renaissance Township Shrachi Burdwan Development Pvt. Ltd.	Aluminium Door Window work
10	IOCL Refinery	RATHCHAKRA PROJECT- IOCL PARADEEP, ODISHA	Aluminium & Other Work Light Weight Partition Work
		IOCL, Paradeep, Substation Odisha	Aluminium Louver
11	Medical college Building	MEDICAL COLLEGE DIMONDHARBOUR & PURULIA	False Ceiling Work
		BETTIAH MEDICAL COLLEGE BETTIAH, BIHAR	Aluminium Door Window Work
		Vizag Medical College- HCC	Aluminium Door Window Work, Under deck Insulation Work, False Ceiling
12	Amusment park	SOLAR DOME, Eco Park Newtown, Kolkata	Aluminium Perforation sheet, False ceiling
13	Studio Building	TELE ACADEMY KMC operated, BARUIPUR, SOUTH 24 PGS	False ceiling, Aluminium & louver, Counter Glass, ACP
14	NHAI Tollway plaza Ancillary Building	PURBANCHAL EXPRESS TOLL PLAZA BUILDING Lucknow, UP	Aluminium & louver, Counter Glass, Flooring, Cubicle Partition
15	Gas pipeline project	Kalpataru PIPE LINE IOCL - RC	Aluminium Door Window Work
16	Commercial complex	Simplycity Mart - Suri	Aluminium Work, Structure Glazing, Glass Door & Calcium Partition

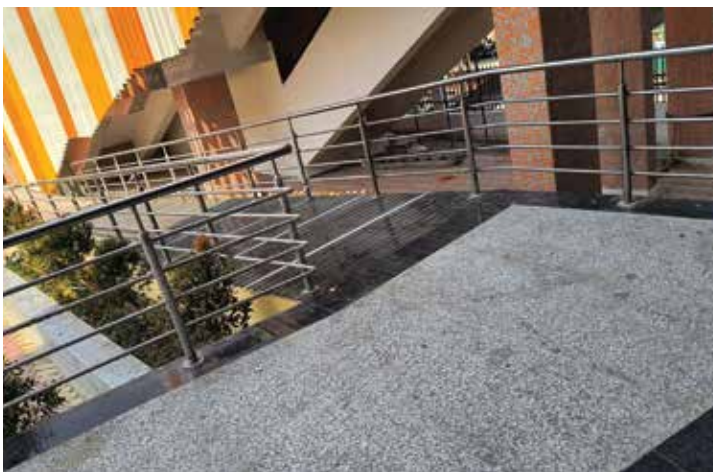
COMPLETED PROJECT PICTURES

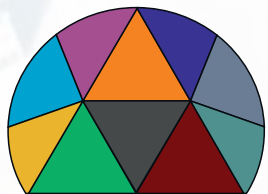


COMPLETED PROJECT PICTURES



COMPLETED PROJECT PICTURES





DURA COAT
POWDER COATER & BANDING SERVICE

A brand of
Ranihati Construction Pvt. Ltd.

◆ Pretreatment on MS 9 Tank

◆ We use powder:



◆ Ms Powder Coating Services

◆ Aluminium Powder Coating Services

◆ Advance Packaging



Contact us :

☎ +91 90882 42431 / +91 76050 34970

📍 Hanuman Mandir, Sankaril Industrial Park,
Dhulagori, Howrah, West Bengal-711302

We have Pipe Bending Machine upto 150 mm

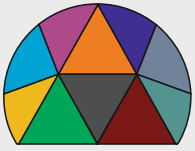
Two sheet Bending Machine, one for Aluminium 6 mm & MS 3 mm and ACP sheet banding machine available



Contact us :

+91 90882 42431 / +91 76050 34970

Hanuman Mandir, Sankaril Industrial Park,
Dhulagori, Howrah, West Bengal-711302



RADIANCE-INTERIOR

MAKE YOUR DREAM HOME IN REALITY

Follow us on:





A brand of
Ranihati Construction Pvt. Ltd.


 <https://www.radiance-interior.com>

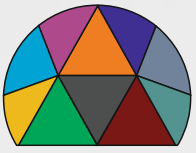
- ◆ Here, your imagination comes in reality.
- ◆ Your spaces occupy Properly
- ◆ Live comfortably, simply & friendly.
- ◆ Proper materials utilization.
- ◆ Appropriate hardware use.
- ◆ We take care of your budget also.
- ◆ We take care of the space management for interior furniture & false ceiling.



 +91 9088511511
+91 6296796142

 radiance.interior22@gmail.com

 M Plaza, Ranihati, Joynagar, Howrah - 711302



RADIANCE-INTERIOR

MAKE YOUR DREAM HOME IN REALITY

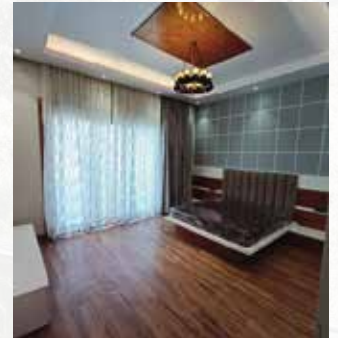
Follow us on:




A brand of
Ranihati Construction Pvt. Ltd.


 <https://www.radiance-interior.com>


- ◆ Living / Hall / Dining room
- ◆ Bedroom
- ◆ Child Room
- ◆ Glass bath
- ◆ Office
- ◆ False ceiling with heat treatment



We do, Facade, Glazing, Door, Window, Partition, SS hand railing, Thermal insulation, Noise insulation, False ceiling, Furniture, Painting & Putty.

 +91 9088511511
+91 6296796142

 radiance.interior22@gmail.com

 M Plaza, Ranihati, Joynagar, Howrah - 711302

Multicell or Multiwall Polycarbonate Sheet

Polycarbonate Sheets in Construction

What is a Polycarbonate Sheet?

Polycarbonate sheets are lightweight, durable, and impact-resistant thermoplastic materials widely used in construction. They offer excellent transparency, making them a strong alternative to glass while being significantly lighter and more flexible.

Key Features & Benefits:

- High Impact Resistance – 250 times stronger than glass, making it virtually unbreakable.
- Lightweight – Easier to handle, transport, and install.
- UV Protection – Blocks harmful UV rays, making it ideal for outdoor applications.
- Weather & Temperature Resistant – Withstands extreme weather conditions, from heavy rain to intense sunlight.
- Excellent Transparency – Offers up to 90% light transmission, similar to glass.
- Flexible & Easy to Install – Can be cut, shaped, and bent as per project requirements.

Applications in Construction:

- Roofing & Skylights – Commonly used for carports, walkways, patios, and industrial roofs.
- Greenhouses & Agricultural Structures – Allows sunlight while protecting plants from harsh weather.
- Facades & Cladding – Enhances aesthetics while ensuring durability.
- Partitions & Safety Barriers – Used in commercial spaces for stylish yet strong enclosures.

Installation Process:

1. Planning & Measurement – Determine the required dimensions and structure compatibility.
2. Cutting & Shaping – Polycarbonate sheets can be cut using a circular saw or a fine-toothed blade.
3. Drilling & Fixing – Pre-drilled holes allow expansion/contraction, preventing cracks.
4. Sealing & Finishing – Proper sealing ensures waterproofing and enhances longevity.
5. Maintenance – Simple cleaning with mild soap and water maintains clarity and durability.



General Consultants**Kolkata East West Metro**

KMRCL, Munshi Premchand Sarani

Kolkata – 700 021

Tel.: +91 33 22622941

Fax:

Email:

Our Ref: EWSAFEM/KMRCL/ITD/511

Your Ref:

Date: 07.03.2017

M/s. ITD Cementation India Limited
Godrej Waterside, Tower 1, Office No. 803,
8th Floor, Block-DP, Salt Lake,
Sector-V, Kolkata – 700 091

Attention: Mr. Mainuddin Ahmed, Project Manager

Work: "Architectural Finishing, Plumbing, Tube well, VAC, Electrical, Fire Fighting works for 6 Elevated stations including lighting of Viaduct & lighting of TSS/ASS of Car Depot and RCC Structural roof over Platform of Sector-V Station of East West Corridor of Kolkata Metro". Contract No. EWSAFEM

Subject: Approval of Vendor for Aluminium Work

Dear Sir,

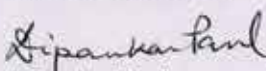
This has reference to your letter no. ITDCM/KMRCL/2017/PN/529 dated 20.02.2017 through which you have had submitted the credential of M/s. Radiance Construction as a Vendor for Aluminium Work.

This is to inform you that competent Authority of KMRCL has accepted your proposal (copy enclosed). You are requested to advise the Vendor to start the work immediately.

Thanking you

Yours faithfully

MYCEL Consortium


(Dipankar Paul)

PM/Elevated & Depot



Encl: As above

CC: Mr. N C Karmali, GM (Civil), KMRCL
Mr. Avijit Chakraborty, EE-II, KMRCL
Mr. Ken Wong, PD, MYCEL



रेल विकास निगम लिमिटेड
Rail Vikas Nigam Limited

(A Government of India Enterprise)

Kolkata Project Implementation Unit
Metro Railway Construction Office Building (Gr. Floor)
(Near Kavi Subhash Metro Railway Station)
P.O. - Panchasayar, P.S. - Patuli, Kolkata - 700 084
Tel. : 91-33-2436-0247
Fax : 91-33-2436-0247
e-mail : cpmlnekolkata@gmail.com

No. RVNL/KOL/NEW GARIA - AIRPORT/METRO/ANS-1/2013/ITDCIL/1828 Date: 24.11.2017

To

Project Manager

M/s. ITD Cementation India Limited,

Godrej Waterside, Tower No. 1, Office #803,
8th Floor, Plot no. 5, Block - DP, Sector - V,
Salt Lake City, Kolkata - 700 091.

Sub: ANS-1 "Construction of Seven (07) stations including related works from Kavi Subhas (New Garia) to Ritwik Ghatak in New Garia- Airport Metro Corridor of Kolkata Metro Railway Line.

Reg: **Approval of Vendor for Alluminium works in door and window.**

Ref: (i) LOA no. RVNL/KOL/NEW GARIA - AIRPORT/METRO/ANS-1 ANS-2 ANS 3/2013 dated 05.03.2014.
(ii) Your Letter no. - ITDCM/RVNL/2017/PN/2245 dated 16.11.2017.

Dear Sir,

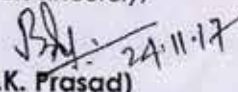
In reference to your letter referred (ii) above, the vendor M/S Radiance Construction, Ranihati, Amta Road, Joynagar, Panchla, Howrah-711302 is hereby approved for alluminium works in door and window against BOQ item no. 9.0 of Schedule A-2.

However, it should be ensured that material is supplied as per Technical Specification in Contract agreement and also the material should be got passed by RVNL before use in work.

This has got approval of Competent Authority.

Thanking you.

Yours sincerely,


(B.K. Prasad)

Dy. GM (P)/ANS - 1

Rail Vikas Nigam Limited, Kolkata

CC: Chief Project Manager/Line/Kolkata/RVNL for information please.

Regd. Off. : Plot No. 25, (1st Floor), August Kranti Bhavan, Bhikaji Cama Place, New Delhi - 110066
Tel. : +91 11 26738295 / 26738395 / 26738495, Fax : +91 11 26182957, Web : www.rvnl.org



भारतीय विमानपत्तन प्राधिकरण
AIRPORTS AUTHORITY OF INDIA



(By e-mail only)

संदर्भ संख्या: AAI/Pune/GM(P)/NITB/Civil/2022-23/162

दिनांक: 01.11.2022

सेवा में,

मैसर्स आईटीडी सीमेंटेशन इंडिया लिमिटेड,

9 वां मंजिल, प्राइमा बे, टावर-बी

गेट नं-5, साकी विहार रोड,

पोवई, मुंबई- 400072

To,

M/s ITD Cementation India Limited,

9th Floor, Prima Bay, Tower-B

Gate No. 5, Saki Vihar Road,

Powai, Mumbai-400072

Through GM(Engg-Project)

Gaganlal
01/11/22

विषय: पुणे हवाईअड्डा, पुणे में नई एकीकृत टर्मिनल बिल्डिंग का निर्माण, पुरानी टर्मिनल बिल्डिंग का पुनर्निर्माण, मौजूदा विस्तारित टर्मिनल बिल्डिंग का संशोधन।

Subject:- Construction of New Integrated Terminal Building, Reconstruction of Old Terminal Building, Modification of Existing Expanded Terminal Building at Civil Enclave Pune Airport, Pune.

Sub Head:- Approval of specialized agency for Internal Glass partitions and ACP cladding work.

Agreement No. AAI/CHQ/ENGG(C)WR/PUNE/NITB/2018-19 Dated 25.10.2018.

महोदय,

With reference to your letter no. ITD Cem/Pune Airport/2022/Civil/3008 dated 25.10.2022 and M/s Egis India recommendation vide letter no. Egis India/AAI/Pune/2022/88684 dated 31.10.2022 on above; approval of competent authority is hereby conveyed for the agency M/s Ranihati Construction Pvt. Ltd., Howrah to work as Specialized agency for the work of Internal Glass partitions and ACP cladding under the project work.

भवदीय

टी. के. दत्ता
01/11/22
(टी. के. दत्ता)

संयुक्त महाप्रबंधक(अभि-सि)

भाविप्रा, पुणे हवाईअड्डा, पुणे

महाप्रबंधक(अभि-परि) कार्यालय

पुणे विमानतल, पुणे-411032

दूरध्वनी: (020)-26687271

ई-मेल: gmenggpripune@aai.aero

महाप्रबंधक(अभि-परि) कार्यालय

पुणे हवाईअड्डा, पुणे-411032

दूरभाष: (020)-26687271

ई-मेल: gmenggpripune@aai.aero

O/o General Manager(Engg-Proj.)

Pune Airport, Pune-411032

Phone: (020)-26687271

E-mail- gmenggpripune@aai.aero

Certificate of Registration

This is to Certify That
Quality Management System of

RANIHATI CONSTRUCTION PRIVATE LIMITED

M PLAZA, SHOP NO 13, RANIHATI, JOYNAGAR, PANCHLA,
HOWRAH - 711302, WEST BENGAL, INDIA.

has been assessed and found to conform to the requirements of

ISO 9001:2015

for the following scope :

DEALS IN FACADE, GLAZING, DOOR, WINDOW, PARTITION, SS HAND
RAILING, THERMAL & NOISE INSULATION, FALSE CEILING,
FURNITURE & PAINTING, CIVIL ENGINEERING WORKS.

Certificate No	: 24MEQPL95	
Initial Registration Date	: 08/03/2024	Issuance Date : 08/03/2024
Date of Expiry	: 07/03/2027	
1st Surve. Due	: 08/02/2025	2nd Surve. Due : 08/02/2026




DIRECTOR



Magnitude Management Services Pvt. Ltd.

Third Floor, A-60, Sector-2, Noida, Gautam Budh Nagar, U.P.-201301, India. e-mail: info@mmscertification.com, website: www.mmscertification.com

*Subject to Successful Surveillance Audit in case Surveillance audit is not allowed to be conducted, this certificate shall be suspended/withdrawn.
Certificate Verification: Please Re-check the validity of certificate at <http://www.mmscertification.com/certificateverify.aspx> or www.mmscertification.com at Active Clients.
Certificate is the property of Magnitude Management Services Pvt. Ltd. and shall be returned immediately when demanded.

+91 9831103565/ +91 9088511511

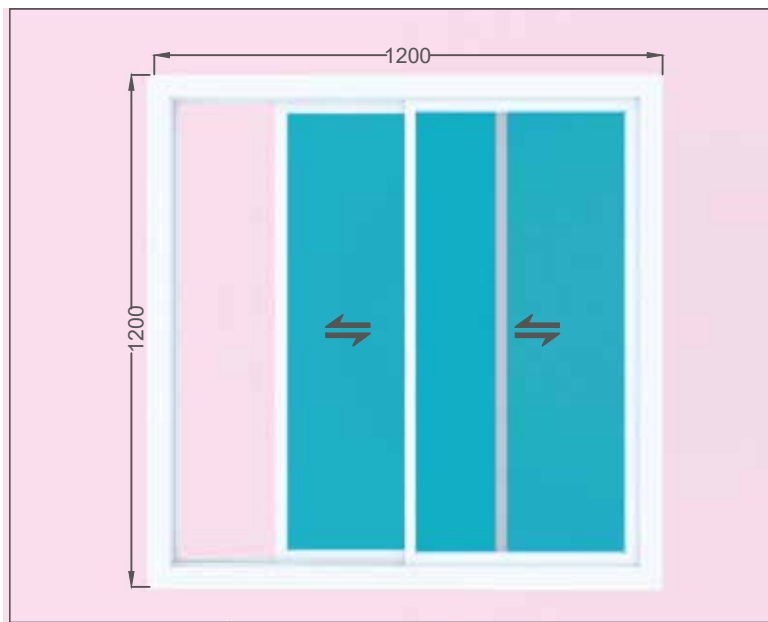
info@rconpl.in



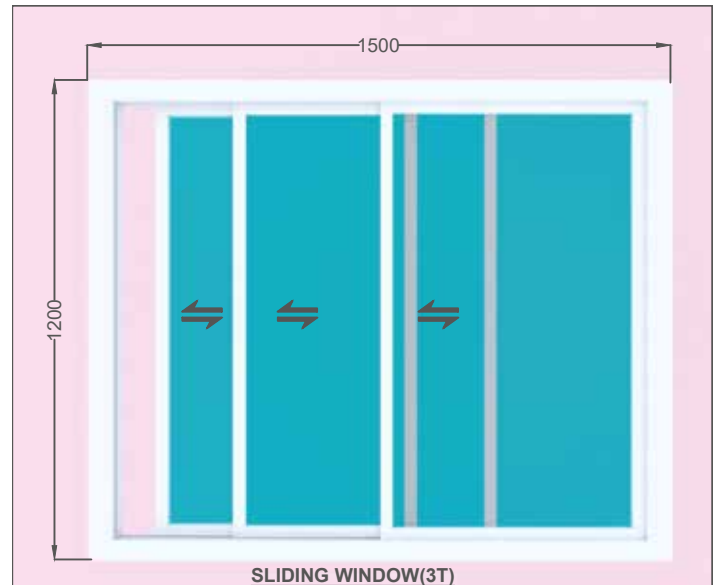
An Aluminium System windows

- A quality system in your budget.
- Tested: 1. Air
2. Water
3. Sound
4. Thermal

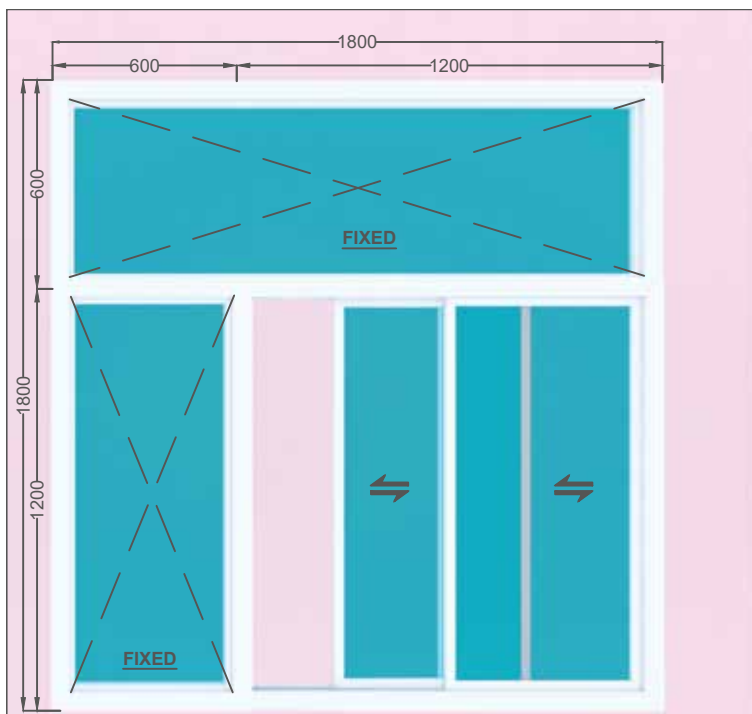
Elevation of Windows/Door



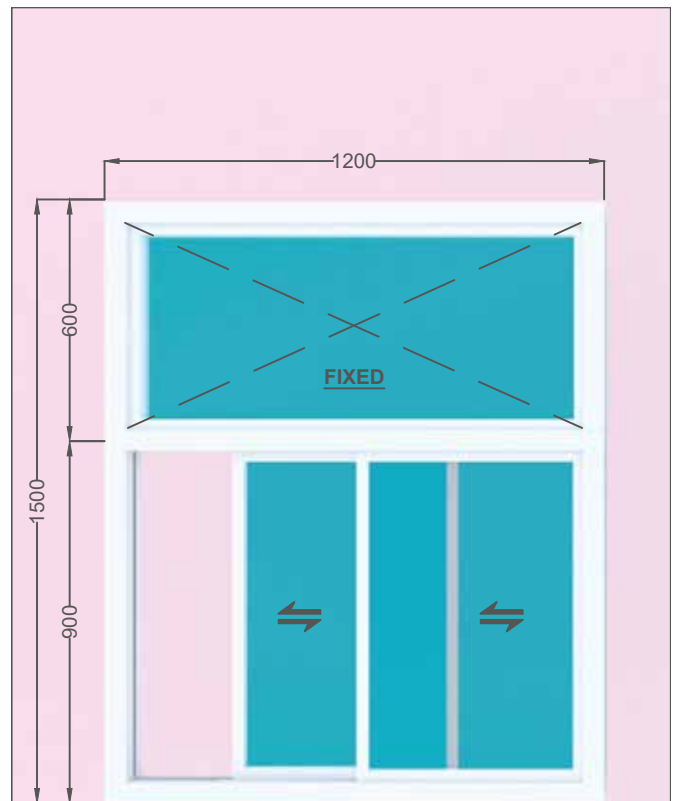
TYPE	2 TRACK SLIDING WINDOW
SIZE	1200 X 1200 mm
RATE/SQM	Rs.5867/- *



TYPE	3 TRACK SLIDING WINDOW
SIZE	1500 X 1200 mm
RATE/SQM	Rs.6784/- *

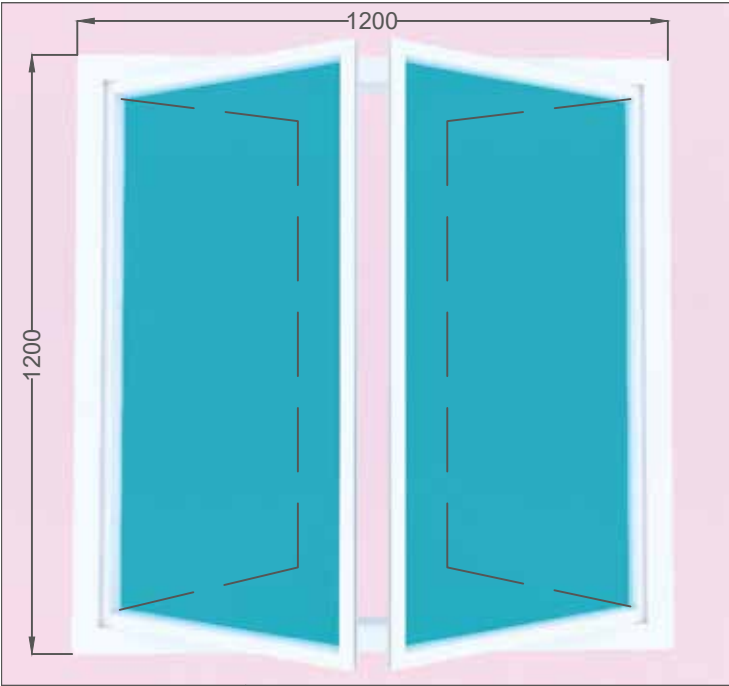


TYPE	PARTLY 2 TRACK SLIDING WINDOW PARTLY FIXED
SIZE	1800 X 1800 mm
RATE/SQM	Rs.4850/- *

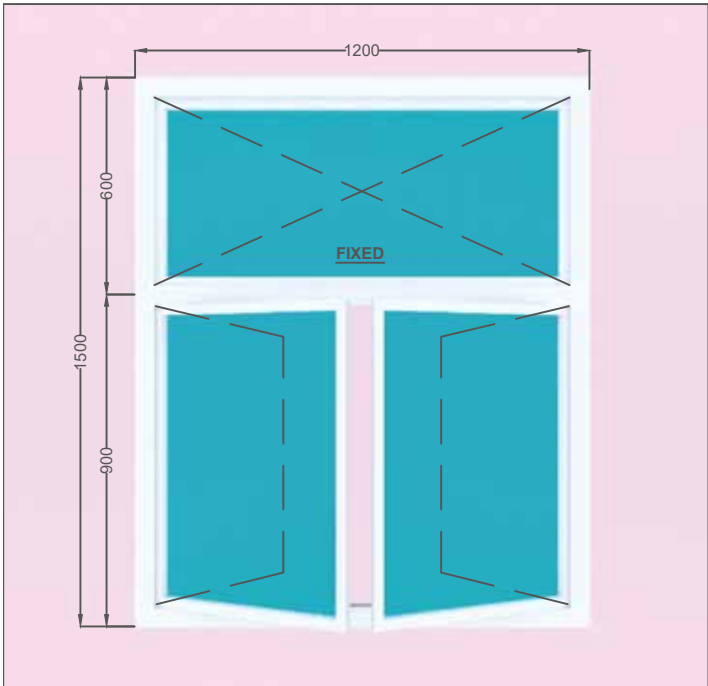


TYPE	PARTLY 2 TRACK SLIDING WINDOW PARTLY FIXED
SIZE	1200 X 1500 mm
RATE/SQM	Rs.5398/- *

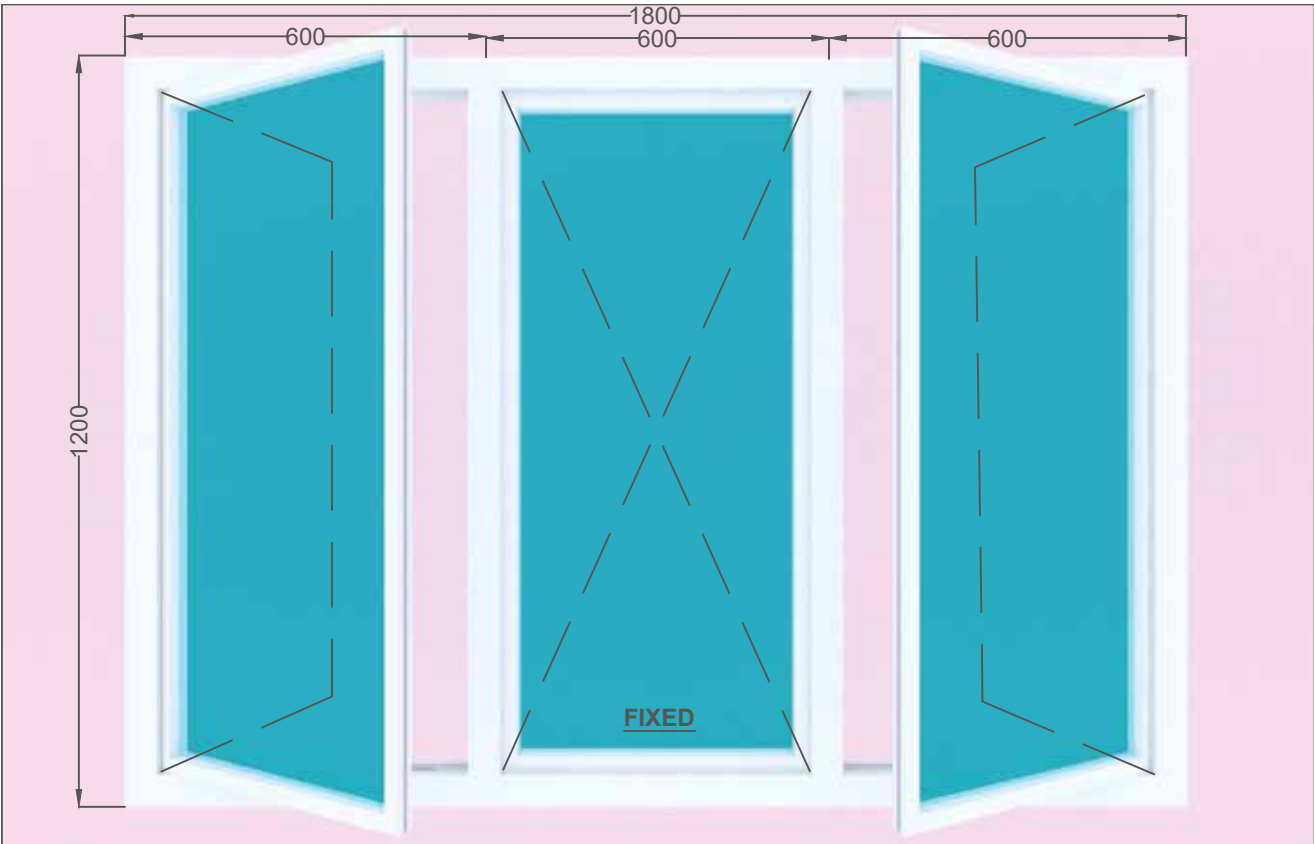
Elevation of Windows/Door



TYPE	CASEMENT WINDOW
SIZE	1200 X 1200 mm
RATE/SQM	Rs.6298/- *



TYPE	PARTLY CASEMENT WINDOW PARTLY FIXED
SIZE	1200 X 1500 mm
RATE/SQM	Rs.6194/- *



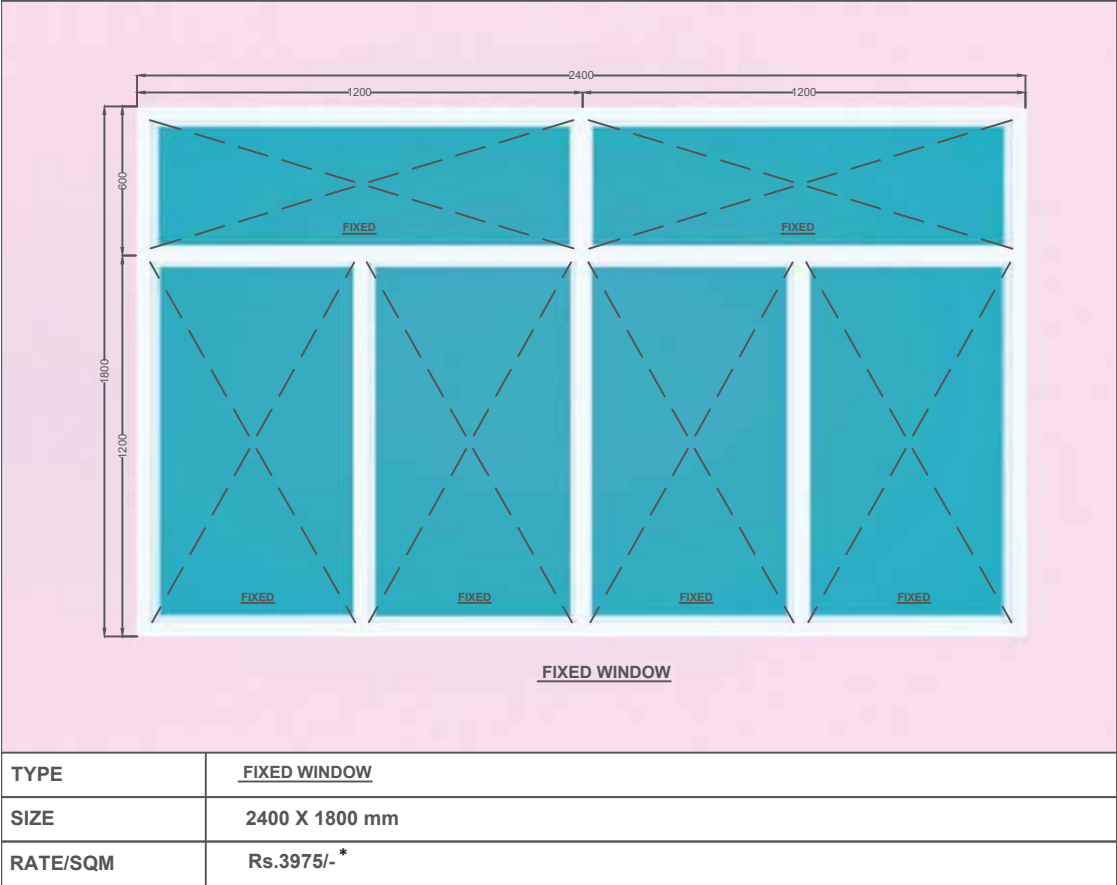
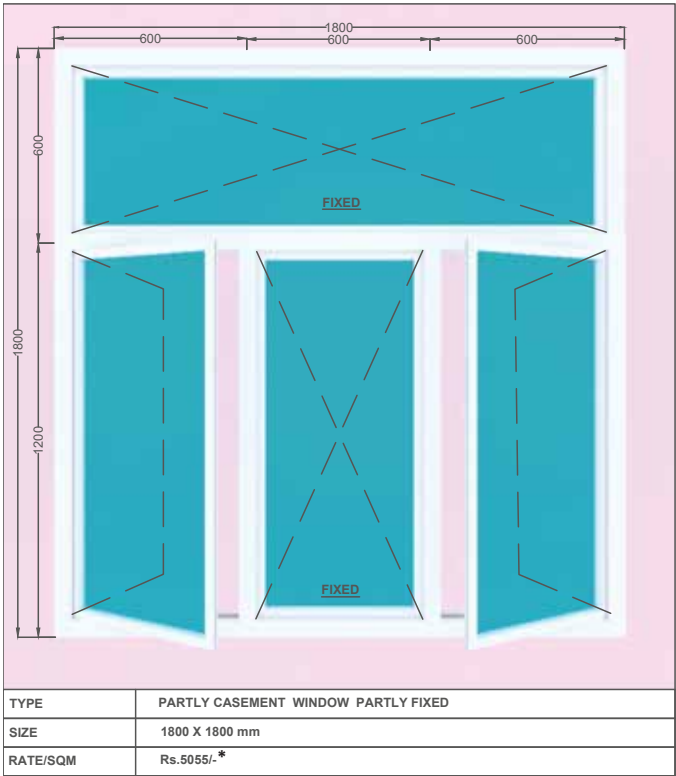
TYPE	PARTLY CASEMENT WINDOW PARTLY FIXED
SIZE	1200 X 1800 mm
RATE/SQM	Rs.6174/- *

+91 9831103565/ +91 9088511511

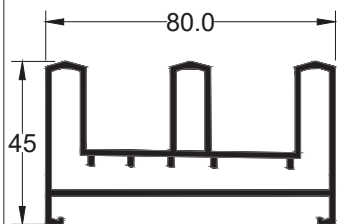
info@rconpl.in

* T & C apply

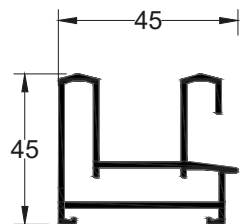
Elevation of Windows/Door



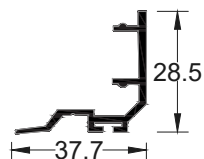
ALUMINIUM PROFILE



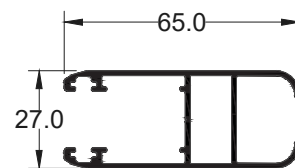
3 TRUCK SLIDING OUTER



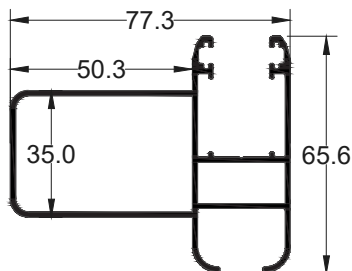
2 TRUCK SLIDING OUTER



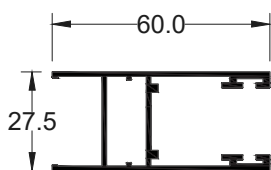
INTERLOCK CLIP SECTION



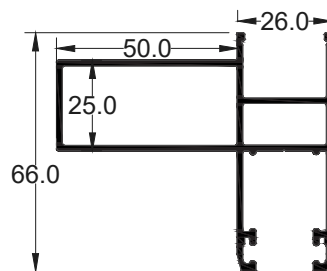
SLIDING SHUTTER



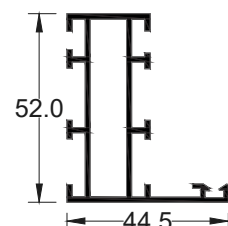
SLIDING REINFORCED SHUTTER



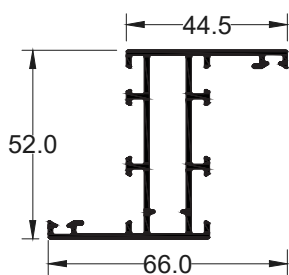
SLIDING SHUTTER(DGU)



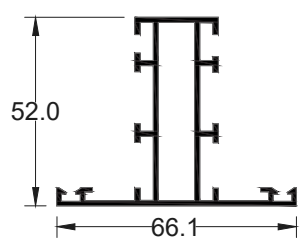
SLIDING REINFORCE SHUTTER(DGU)



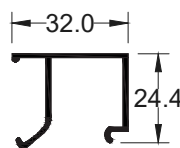
CASEMENT OUTER



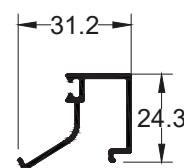
CASEMENT SHUTTER



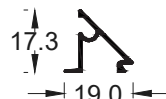
CASEMENT OUTER MULLION



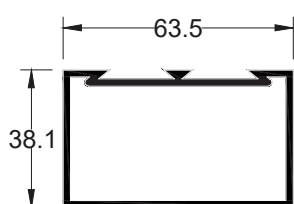
CASEMENT CLIP



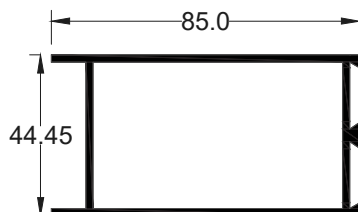
CASEMENT CLIP (DGU)



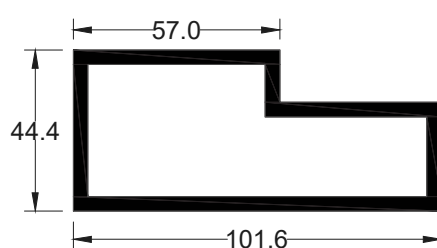
GLAZING CLIP



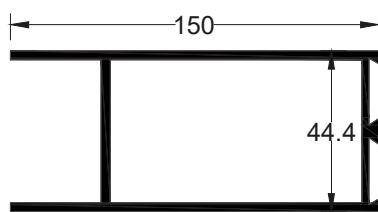
SINGLE GLAZING



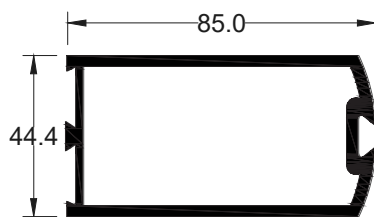
ALU. DOOR HINGH SIDE VERTICAL SECTION



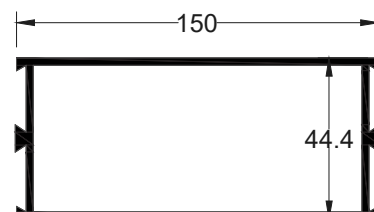
ALU.DOOR FRAME SECTION



ALU. DOOR SHUTTER TOP & BOTTOM SECTION



ALU. DOOR LOCK SIDE VERTICAL SECTION



ALU.DOOR SHUTTER MIDDLE SECTION

Using Hardware



EPDM Gasket



Wool Pile



Nylon Anchor



SS Screw



Sliding Roller



Star Lock



Hinge



Aluminium Tower Bolt



Door Lock



Openable Handle



Friction Stay



Door Handle



Sliding Lock



Door Closer



Weather Sealant

Why will you choose DOZO System Windows?

Basic Windows requirements are fulfilled by DOZO Windows

1. AIR – Wind pressure tested by 2.2 Kpa
2. WATER – Water tested by 0.30 Kpa
3. SOUND – Sound/noise cutoff from outside to inside depends on glass 20–45 dB
4. THERMAL – Heat reduced from outside to inside depends on glass by 10–12°C
5. Fully Factory made with Automatic machine.
6. Quality & tested raw material. *
7. Five year warranty on hardware.
8. Fifteen years warranty on Powder Coating.
9. Twenty five years warranty on Aluminium material.
10. Reasonable price.
11. 4mm–24mm glass will be fitted in our windows & doors.

To ensure the quality, durability, and performance of our Aluminium Windows with Thermal & Noise Insulation, we comply with industry standards and conduct rigorous testing.



Tested Parameters of DOZO System Windows:

Parameter	Testing Standard / Method	Performance Benchmark
Wind Load Resistance	IS 875 (Part 3):2015	Designed to withstand high wind pressures, ensuring structural integrity.
Thermal Insulation (U-Value)	ISO 10077-2	Low U-value for superior heat retention and energy efficiency.
Sound Insulation	ISO 10140 / ASTM E90	Up to 45 dB noise reduction for a peaceful indoor environment.
Water Tightness	EN 1027 / IS 4021	Prevents water infiltration, ensuring leak-proof performance.
Air Permeability	EN 1026 / ASTM E283	High airtightness, reducing energy loss and preventing dust ingress.
Impact Resistance	IS 2380 / EN 12600	Tested for impact strength to prevent breakage under external forces.
Fire Resistance	IS 3809 / EN 13501-1	Non-combustible aluminium with fire-resistant properties.
Corrosion & Weather Resistance	IS 5523 / ASTM B117	Resistant to humidity, UV radiation, and extreme climate conditions.
Durability & Lifecycle Testing	IS 12817 / EN 1191	30,000+ open-close cycles to ensure long-term performance.
Glass Strength & Safety	IS 2553 / EN 12150	Tested with toughened & laminated safety glass for enhanced security.



Advantage & Disadvantage of DOZO Aluminium system with uPVC:

Feature	Our Aluminium Windows (with Insulated Core)	uPVC Windows
Strength & Durability	✔ High durability, supports large glass panels	✗ Less strong, can warp over time
Fire Resistance	✔ Fire-resistant, does not release toxic fumes	✗ Can melt & release harmful gases
Thermal Insulation	✔ Advanced insulation inside hollow sections	✔ Decent but not as effective
Noise Reduction	✔ Excellent soundproofing with insulated core	✗ Moderate noise reduction
Maintenance	✔ Low maintenance, weather-resistant	✗ Requires care to prevent discoloration
Eco-Friendliness	✔ 100% recyclable, sustainable	✗ Non-biodegradable but recyclable
Customization	✔ Available in multiple colors & finishes	✗ Limited design options
Health & Safety	✔ Lead-free, non-toxic materials (IS 16610:2017), prevents mold growth, and fire-resistant	✗ May contain toxic lead or cadmium , prone to mold & bacteria growth
Indoor Air Quality	✔ Low VOC emissions (IS 4833:1993), ensuring healthier indoor air	✗ Some uPVC materials release harmful VOCs , affecting air quality
Hygiene & Allergen Prevention	✔ Non-porous surface prevents bacteria & mold growth	✗ Can trap dust and allergens , leading to respiratory issues

Design Success, One Pixel at a Time

The Services We Offer:

- App Developing
- Website Developing
- Logo Designing
- Poster, Banner, Brochure
- Business Card Designing
- Content Marketing
- Video Editing
- Influencer Marketing
- SEO





HAVELLS GALLERY



A UNIT OF SUMATRA TRADING PVT. LTD.

Reg. Add.:- Ranihati-Amta Road 22 Bigha, Panchla, Howrah- 711322
Contact :- 90078 24246 / 6292237201 | Email : sumatra.trading20@gmail.com